



Customer: Nations Healer Plus
Address: 3933 Plainfield Ave
 NE Grand Rapid, MI 49525
Sample ID: 25 D8
Matrix: Edible
Labnumber: 21D0246-07 Total mass or volume per unit (g or mL): 3.3504

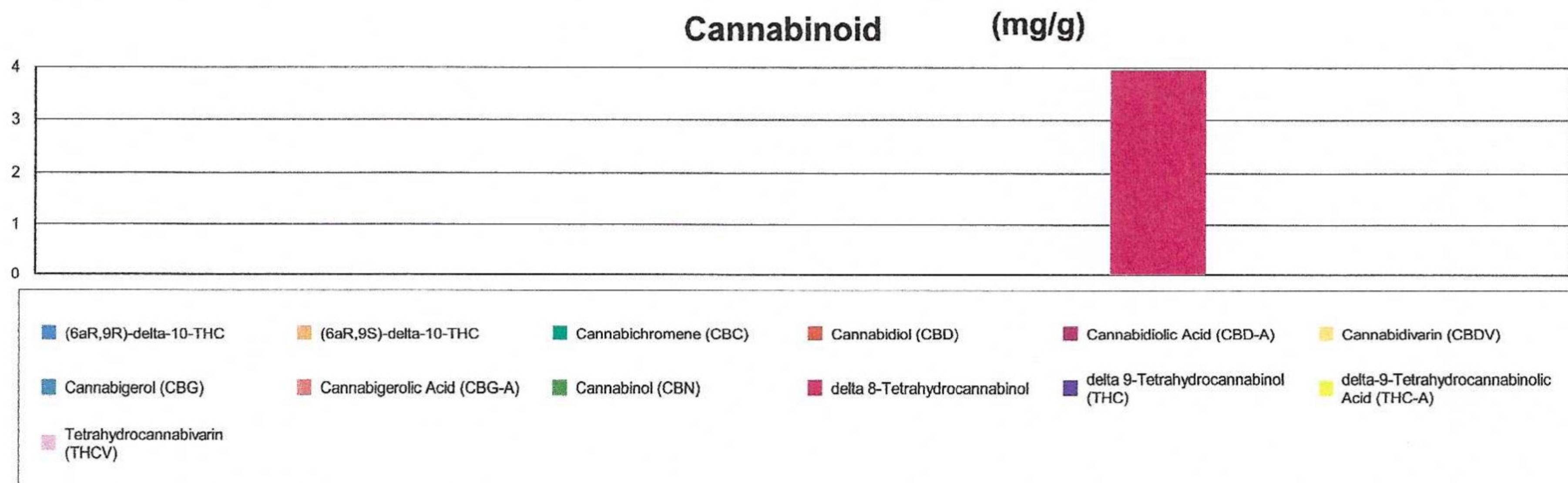
Cannabinoid Profile

Test Conditions: 19°C
Extraction Technician: CB
Analytical Chemist: SH

Extraction Date(s)	Analysis Date(s)
4/19/2021	4/19/2021

Cannabinoids (HPLC)		Results		
	LOD (mg/g)	%	mg/g	mg/Gummy
Cannabidivarin (CBDV)	<0.050			
Cannabidiolic Acid (CBD-A)	<0.050			
Cannabigerolic Acid (CBG-A)	<0.050			
Cannabigerol (CBG)	<0.050			
Cannabidiol (CBD)	<0.050			
Tetrahydrocannabivarin (THCV)	<0.050			
Cannabinol (CBN)	<0.050			
Cannabichromene (CBC)	<0.050			
delta 9-Tetrahydrocannabinol (THC)	<0.050			
delta-9-Tetrahydrocannabinolic Acid (THC-A)	<0.050			
delta 8-Tetrahydrocannabinol		.89	8.95	29.9
(6aR,9S)-delta-10-THC	<0.050			
(6aR,9R)-delta-10-THC	<0.050			
Cannabinoids Total		%	mg/g	
Max Active THC (delta-9-tetrahydrocannabinol)		0.00	0.00	
Max Active CBD		0.00	0.00	
T.Active Cannabinoids		0.00	0.00	
Total Cannabinoids		0.90	8.95	

Following USDA guidelines on uncertainty, Altitude Consulting's uncertainty is calculated to be +/- 2% for all cannabinoids using a coverage factor of 2 (95% confidence interval). Measurement uncertainty has not been factored into reported values.
 Blank results indicate the compound was below the limit of detection.



Gary Brook - Laboratory Director - 4/20/2021

Reporting Limits will vary based on sample extraction weight used for the analysis.
 The results of this report are based solely on the sample submitted and cannot be reproduced. Decision Rule: Measurement uncertainty is not accounted for in the reported values.
 Results are based solely on calculated numbers. Altitude Consulting makes no Statements of conformity. Pesticide, metal, and microbial analyses are subcontracted to ISO 17025 laboratories.